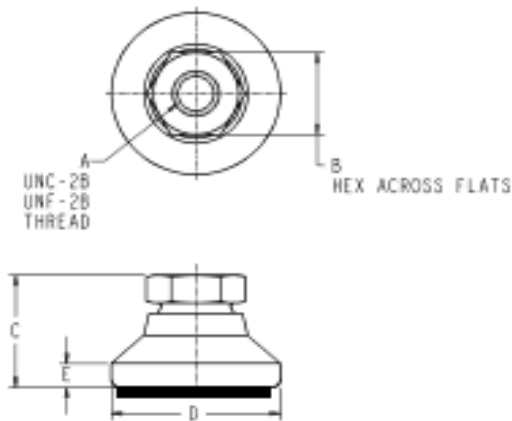


## LEVELING DEVICES- Low Cost High Value Socket Style With Pad

Low Cost High Value Levelers are available in both stud styles and socket styles, with or without elastomer pad.

Vlier HI-VALUE Socket Style Steel and Stainless Steel Leveling Devices swivel 15° off the centerline to adjust to uneven surfaces and level machine tools, electronic racks, benches, etc. For applications with an existing stud installation. Zinc plate with gold chromate finish is standard add '3' to end of part number for new Steel Nickel Chromate finish.



Part No.	Max load (lbs)	A Thread	B Hex	C Height to Hex	D Pad Diameter	E
<b>HVEP298B</b>	525	10-32	3/8	17/32	3/4	7/64
<b>HVEP300B</b>	800	1/4-20	1/2	45/64	1	5/32
<b>HVEP304B</b>	2800	3/8-16	5/8	7/8	1-1/4	3/16
<b>HVEP306B</b>	3,750	1/2-13	3/4	1-1/8	1-7/8	1/4
<b>HVEP308B</b>	4,500	5/8-11	7/8	1-1/4	2-1/2	5/16
<b>HVEP310B</b>	5,400	3/4-10	1-1/16	1-1/2	3	1/2
<b>HVEP312B</b>	16400	1-8	1-3/8	1-7/8	4	13/32

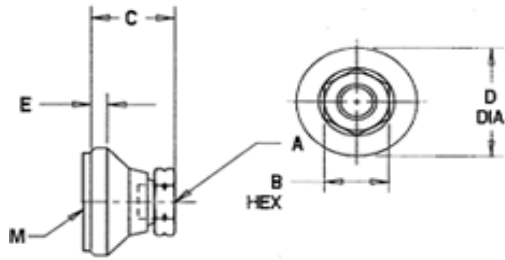
	Max load  (lbs)	A  Thread	B  Hex	C  Height to Hex	D  Pad Diameter	E
Steel Nickel Finish						
<b>HVEP298B3</b>	525	10-32	3/8	17/32	3/4	7/64
<b>HVEP300B3</b>	800	1/4-20	1/2	45/64	1	5/32
<b>HVEP304B3</b>	2800	3/8-16	5/8	7/8	1-1/4	3/16
<b>HVEP306B3</b>	3,750	1/2-13	3/4	1-1/8	1-7/8	1/4
<b>HVEP308B3</b>	4,500	5/8-11	7/8	1-1/4	2-1/2	5/16
<b>HVEP310B3</b>	5,400	3/4-10	1-1/16	1-1/2	3	1/2
<b>HVEP312B3</b>	16400	1-8	1-3/8	1-7/8	4	13/32

	Max load  (lbs)	A  Thread	B  Hex	C  Height to Hex	D  Pad Diameter	E
Stainless Steel/ Passivated						
<b>HVESSP298B</b>	525	10-32	3/8	17/32	3/4	7/64
<b>HVESSP300B</b>	800	1/4-20	1/2	45/64	1	5/32
<b>HVESSP304B</b>	2800	3/8-16	5/8	7/8	1-1/4	3/16
<b>HVESSP306B</b>	3,750	1/2-13	3/4	1-1/8	1-7/8	1/4
<b>HVESSP308B</b>	4,500	5/8-11	7/8	1-1/4	2-1/2	5/16
<b>HVESSP310B</b>	5,400	3/4-10	1-1/16	1-1/2	3	1/2
<b>HVESSP312B</b>	16400	1-8	1-3/8	1-7/8	4	13/32

## Metric LEVELING DEVICES- Low Cost High Value Socket Style With Pad

Low Cost High Value Levelers are available in both stud styles and socket styles, with or without elastomer pad.

Vlier HI-VALUE Socket Style Steel and Stainless Steel Leveling Devices swivel 15° off the centerline to adjust to uneven surfaces and level machine tools, electronic racks, benches, etc. For applications with an existing stud installation. Zinc plate with gold chromate finish is standard add '3' to end of part number for new Steel Nickel Chromate finish.



Part No.	Max load KG (lbs)	A Thread	B Hex MM	C Height to Hex (+/- .02)	D Pad Dia. in	E in	M Dia. in
<b>Steel</b>							
<b>HVEPM6B</b>	240 (525)	M6 x 1-6g .23 MIN FULL THD	17	0.88	1.25	0.17	0.63
<b>HVEPM8B</b>	375 (825)	M8 x 1.25 X 6H .31 MIN FULL THD	19	1.13	1.88	0.25	0.91
<b>HVEPM10B</b>	1273 (2800)	M10 x 1.5-6g .44 MIN FULL THD	17	0.88	1.25	0.17	1.12
<b>HVEPM12B</b>	1750 (3750)	M12 x 1.75-6g .44 MIN FULL THD	19	1.13	1.88	0.25	1.75
<b>HVEPM16B</b>	2046 (4500)	M16 x 2.5-6g .44 MIN FULL THD	24	1.25	2.5	0.31	2.37
<b>HVEPM20B</b>	2455 (5400)	M20 x 2.5-6g .62 MIN FULL THD	30	1.5	3	0.5	2.87
<b>HVEPM24B</b>	7500 (16500)	M24 x 3-6g .81 MIN FULL THD	30	1.5	3	0.5	3.87

	Max load KG (lbs)	A Thread	B Hex MM	C Height to Hex (+/- .02)	D Pad Dia. in	E in	M Dia. in
<b>Stainless</b>							
<b>HVESSPM6B</b>	240 (525)	M6 x 1-6g .23 MIN FULL THD	17	0.88	1.25	0.17	0.63
<b>HVESSPM8B</b>	375 (825)	M8 x 1.25 X 6H .31 MIN FULL THD	19	1.13	1.88	0.25	0.91
<b>HVESSPM10B</b>	1273 (2800)	M10 x 1.5-6g .44 MIN FULL THD	17	0.88	1.25	0.17	1.12
<b>HVESSPM12B</b>	1750 (3750)	M12 x 1.75-6g .44 MIN FULL THD	19	1.13	1.88	0.25	1.75
<b>HVESSPM16B</b>	2046 (4500)	M16 x 2.5-6g .44 MIN FULL THD	24	1.25	2.5	0.31	2.37
<b>HVESSPM20B</b>	2455 (5400)	M20 x 2.5-6g .62 MIN FULL THD	30	1.5	3	0.5	2.87
<b>HVESSPM24B</b>	7500 (16500)	M24 x 3-6g .81 MIN FULL THD	30	1.5	3	0.5	3.87